







CRUX Cable Glands for Non-Armoured Cables with Rigid Conduit Fitting

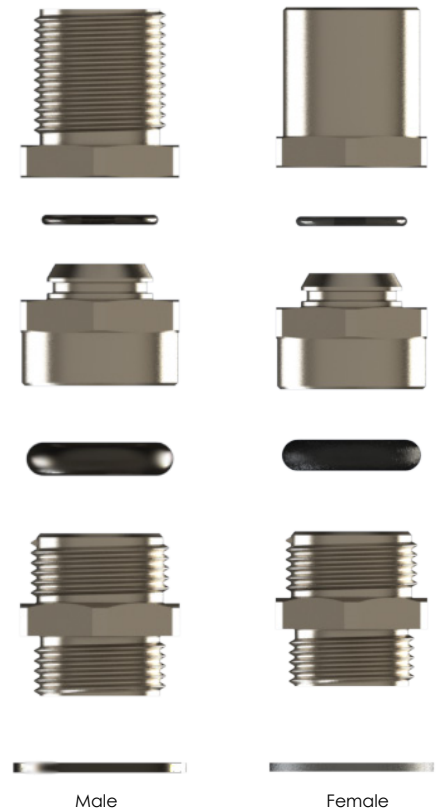
Crux Rigid Con. Fitting



Technical Details			
Material	Body, Cap	Brass, Brass Nickel Plated, Stainless Steel	
	Inner Parts	Brass, Brass Nickel Plated, Stainless Steel	
Material	Seal	Halogen Free Silicone	
	O-ring	Halogen Free Silicone	
Ingress Protection Rating	IP 68 - 5 Bar, 30 min IP 66		
Operating Temperature	Seal Material	Silicone	
		-60°C to +130°C	
Equipment For	Gas & Dust potentially explosive atmospheres		
Suitable for use in	Group II	Gas Group IIC	ZONE1/ZONE2
	Group III	Dust Group IIIC	ZONE21/ZONE 22
Equipment Marking	Ex II 2GD Ex eb IIC Gb Ex tb IIIC Db		
Thread Type	<ul style="list-style-type: none"> • Metric (M) ISO Pitch 1,5 • NPT (N) ANSI ASME B1.20.1 • Other thread types also available upon request. 		
Cable Type	Non-armoured & Braided when terminated inside enclosure		
Accessories	<ul style="list-style-type: none"> • Lock nuts • Deluge Seal • Gaskets (Washers) • Serrated Washers • Earth tags • Shroud 		
	Remarks	• Accessories must be ordered separately.	
Approvals	Certificate Number	Standards	
	CESI 21 ATEX 031X	EN 60079-0, -1, -7, -31	
	IECEx CES 22.0009X	IEC 60079-0, -1, -7, -31	
	2024312313000605	IEC 60079-0,-1,-7,-31	
	TC RU C-TR.AA87.B.01120/23	ГОСТ 31610.0-2014 ГОСТ IEC 60079-1:2013 ГОСТ IEC 60079-31:2013	
	DNV 23.0154 X	ABNT NBR IEC 60079-0:2013 ABNT NBR IEC 60079-1:2009 ABNT NBR IEC 60079-7:2008 ABNT NBR IEC 60079-31:2011	
	TAE000004TA	IEC 60079-0,-1,-7,-31	

-For details of approvals, see our website.

* The standard marking consists ATEX & IECEx only. Marking acc. to other standards on request.



Male

Female

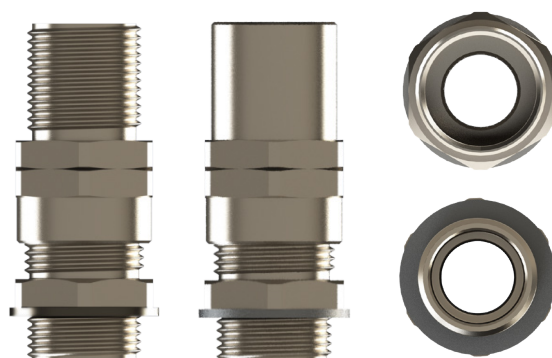
Order Coding									
Part Number	Material	Seal	-	Gasket (Washer)	Serrated Washer	Lock Nut	Shroud	Earth Tag	Deluge Seal
Mandatory	Mandatory	Mandatory	-	Option	Option	Option	Option	Option	Option
See table	B Brass BN Brass nickel plated X Stainless steel 316L	S Silicone	-	WS Silicone	WSR Serrated washer	L Lock nut	S Shroud	E Earth tag	D Deluge Seal
Example									
CRXM1M1M	BN	S	-	WS	WSR	L	S	E	D

Hazardous Applications

EX - e CRUX Rigid Conduit Fitting

Gas&Dust / Metal Products / Cable Glands for Armoured Cables

CRUX Cable Glands for Non-Armoured Cables with Rigid Conduit Fitting



Thread Type **METRIC acc. to ISO 965-3**

Outer Thread Size	Conduit Thread Size	Clamping Range Ø min-max mm	Outer Thread Length TL mm	Spanner Width			Outer Ø D mm	max. Height H mm	Part Number (Female)	Part Number (Male)
				Body	Swivel Cap	Swivel Body				
				SW mm	SW mm	SW mm				
M12	M12x 1.5	3.0 - 8.0	9.0	16.0	16.0	16.0	18.0	39.0	CRXF0SM0SM	CRXM0SM0SM
	M16x 1.5				18.0	16.0			CRXF0SM01M	CRXM0SM01M
M16	M12x 1.5	3.0 - 8.0	9.0	20.0	16.0	16.0	18.0	39.0	CRXF01SM0SM	CRXM01SM0SM
	M16x 1.5				18.0	16.0			CRXF01SM01M	CRXM01SM01M
	M16x 1.5	5.5 - 12.0	9.0	20.0	24.0	24.0	26.5	46.0	CRXF01M01M	CRXM01M01M
	M20x 1.5				24.0	24.0			CRXF01M1M	CRXM01M1M
M20	M12x 1.5	3.0 - 8.0	9.0	24.0	16.0	16.0	18.0	39.0	CRXF1XSM0SM	CRXM1XSM0SM
	M16x 1.5				18.0	16.0			CRXF1XSM01M	CRXM1XSM01M
	M16x 1.5	5.5 - 12.0	9.0	24.0	24.0	24.0	26.5	46.0	CRXF1SM01M	CRXM1SM01M
	M20x 1.5				24.0	24.0			CRXF1SM1M	CRXM1SM1M
	M20x 1.5	9.0 - 16.0	9.0	24.0	24.0	24.0	26.5	48.0	CRXF1M1M	CRXM1M1M
	M25x 1.5				30.0	30.0			CRXF1M2M	CRXM1M2M
M25	M20x 1.5	9.0 - 16.0	9.0	30.0	24.0	24.0	26.5	48.0	CRXF2SM1M	CRXM2SM1M
	M25x 1.5				30.0	30.0			CRXF2SM2M	CRXM2SM2M
	M25x 1.5	12.0 - 20.0	9.0	30.0	30.0	30.0	33.0	50.0	CRXF2M2M	CRXM2M2M
	M32x 1.5				36.0	36.0			CRXF2M3M	CRXM2M3M
M32	M25x 1.5	12.0 - 20.0	9.0	36.0	30.0	30.0	33.0	50.0	CRXF3SM2M	CRXM3SM2M
	M32x 1.5				36.0	36.0			CRXF3SM3M	CRXM3SM3M
	M32x 1.5	16.0 - 26.0	9.0	36.0	36.0	36.0	39.8	52.0	CRXF3M3M	CRXM3M3M
	M40x 1.5				46.0	46.0			CRXF3M4M	CRXM3M4M
M40	M32x 1.5	16.0 - 26.0	9.0	46.0	36.0	36.0	39.8	52.0	CRXF4SM3M	CRXM4SM3M
	M40x 1.5				46.0	46.0			CRXF4SM4M	CRXM4SM4M
	M40x 1.5	20.0 - 33.0	9.0	46.0	46.0	46.0	51.0	54.0	CRXF4M4M	CRXM4M4M
	M50x 1.5				55.0	55.0			CRXF4M5M	CRXM4M5M
M50	M40x 1.5	20.0 - 33.0	9.0	55.0	46.0	46.0	51.0	54.0	CRXF5SM4M	CRXM5SM4M
	M50x 1.5				55.0	55.0			CRXF5SM5M	CRXM5SM5M
	M50x 1.5	29.0 - 41.0	9.0	55.0	55.0	55.0	61.0	56.0	CRXF5M5M	CRXM5M5M
	M63x 1.5				67.0	67.0			CRXF5M6M	CRXM5M6M
M63	M50x 1.5	29.0 - 41.0	9.0	67.0	55.0	55.0	61.0	56.0	CRXF6SM5M	CRXM6SM5M
	M63x 1.5				67.0	67.0			CRXF6SM6M	CRXM6SM6M
	M63x 1.5	36.0 - 52.0	9.0	67.0	67.0	67.0	75.0	58.0	CRXF6M6M	CRXM6M6M
	M75x 1.5				80.0	80.0			CRXF6M7M	CRXM6M7M
M75	M63x 1.5	36.0 - 52.0	9.0	80.0	67.0	67.0	75.0	58.0	CRXF7SM6M	CRXM7SM6M
	M75x 1.5				80.0	80.0			CRXF7SM7M	CRXM7SM7M
	M75x 1.5	50.0 - 65.0	9.0	80.0	80.0	80.0	89.0	60.0	CRXF7M7M	CRXM7M7M
	M80x 1.5				85.0	85.0			CRXF7M80M	CRXM7M80M
	M90x 1.5				95.0	95.0			CRXF7M8M	CRXM7M8M

CRUX Cable Glands for Non-Armoured Cables with Rigid Conduit Fitting

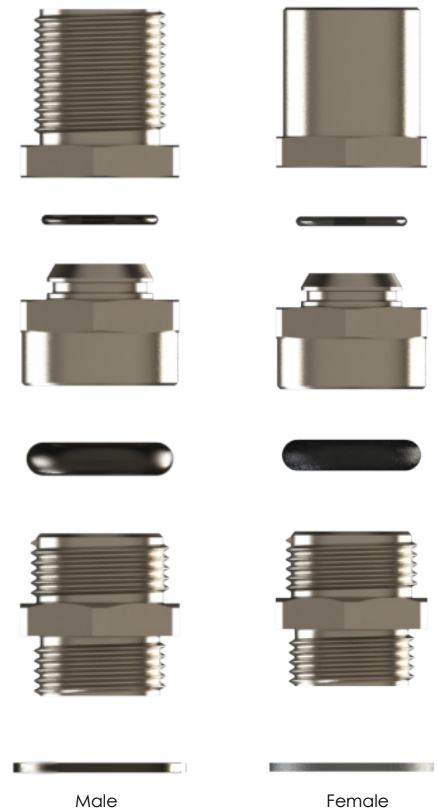
Crux Rigid Con. Fitting



Technical Details			
Material	Body, Cap	Brass, Brass Nickel Plated, Stainless Steel	
	Inner Parts	Brass, Brass Nickel Plated, Stainless Steel	
Material	Seal	Halogen Free Silicone	
	O-ring	Halogen Free Silicone	
Ingress Protection Rating	IP 68 - 5 Bar, 30 min IP 66		
Operating Temperature	Seal Material	Silicone	
		-60°C to +130°C	
Equipment For	Gas & Dust potentially explosive atmospheres		
Suitable for use in	Group II	Gas Group IIC	ZONE1/ZONE2
	Group III	Dust Group IIIC	ZONE21/ZONE 22
Equipment Marking	Ex II 2GD Ex eb IIC Gb Ex tb IIIC Db		
Thread Type	<ul style="list-style-type: none"> • Metric (M) ISO Pitch 1,5 • NPT (N) ANSI ASME B1.20.1 • Other thread types also available upon request. 		
Cable Type	Non-armoured & Braided when terminated inside enclosure		
Accessories	<ul style="list-style-type: none"> • Lock nuts • Deluge Seal • Gaskets (Washers) • Serrated Washers • Earth tags • Shroud 		
Remarks	• Accessories must be ordered separately.		
Approvals	Certificate Number	Standards	
	CESI 21 ATEX 031X	EN 60079-0, -1, -7, -31	
	IECEx CES 22.0009X	IEC 60079-0, -1, -7, -31	
	2024312313000605	IEC 60079-0,-1,-7,-31	
	TC RU C-TR.AA87.B.01120/23	GOCT 31610.0-2014 GOCT IEC 60079-1:2013 GOCT IEC 60079-31:2013	
	DNV 23.0154 X	ABNT NBR IEC 60079-0:2013 ABNT NBR IEC 60079-1:2009 ABNT NBR IEC 60079-7:2008 ABNT NBR IEC 60079-31:2011	
	TAE000004TA	IEC 60079-0,-1,-7,-31	

-For details of approvals, see our website.

* The standard marking consists ATEX & IECEx only. Marking acc. to other standards on request.



Male

Female

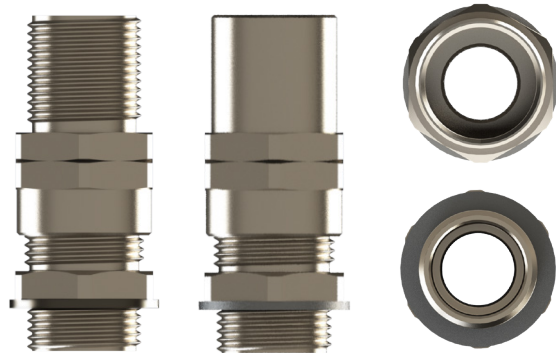
Order Coding									
Part Number	Material	Seal	-	Gasket (Washer)	Serrated Washer	Lock Nut	Shroud	Earth Tag	Deluge Seal
Mandatory	Mandatory	Mandatory	-	Option	Option	Option	Option	Option	Option
See table	B Brass BN Brass nickel plated X Stainless steel 316L	S Silicone	-	WS Silicone	WSR Serrated washer	L Lock nut	S Shroud	E Earth tag	D Deluge Seal
Example									
CRXM1M1M	BN	S	-	WS	WSR	L	S	E	D

Hazardous Applications

EX - e CRUX Rigid Conduit Fitting

Gas&Dust / Metal Products / Cable Glands for Armoured Cables

CRUX Cable Glands for Non-Armoured Cables with Rigid Conduit Fitting



Thread Type NPT acc. to ANSI ASME B1.20.1

Outer Thread Size	Conduit Thread Size	Clamping Range Ø min-max mm	Outer Thread Length TL mm	Spanner Width			Outer Ø D mm	max. Height H mm	Part Number (Female)	Part Number (Male)	
				Body	Swivel Cap	Swivel Body					
				SW mm	SW	SW					
1/4"	1/4"	3.0 - 8.0	16.0	16.0	16.0	16.0	18.0	39.0	CRXF0SN0SN	CRXM0SN0SN	
	3/8"				18.0	16.0	20.0		CRXF0SN01N	CRXM0SN01N	
3/8"	1/4"	3.0 - 8.0	16.0	20.0	16.0	16.0	18.0	39.0	CRXF01SN0SN	CRXM01SN0SN	
	3/8"				18.0	16.0	20.0		CRXF01SN01N	CRXM01SN01N	
	3/8"	5.5 - 12.0	16.0	20.0	24.0	24.0	26.5	46.0	CRXF01N01N	CRXM01N01N	
	1/2"								CRXF01N11N	CRXM01N11N	
1/2"	1/4"	3.0 - 8.0	21.0	24.0	16.0	16.0	18.0	39.0	CRXF1XSN0SN	CRXM1XSN0SN	
	3/8"				18.0	16.0	20.0		CRXF1XSN01N	CRXM1XSN01N	
	3/8"	5.5 - 12.0	21.0	24.0	24.0	24.0	26.5	46.0	CRXF1SN01N	CRXM1SN01N	
	1/2"								CRXF1SN1N	CRXM1SN1N	
	1/2"	3/4"	9.0 - 16.0	21.0	24.0	24.0	24.0	26.5	48.0	CRXF1N1N	CRXM1N1N
						30.0	30.0	33.0		CRXF1N2N	CRXM1N2N
3/4"	1/2"	9.0 - 16.0	21.0	30.0	24.0	24.0	26.5	48.0	CRXF2SN1N	CRXM2SN1N	
	3/4"				30.0	30.0	33.0		CRXF2SN2N	CRXM2SN2N	
	3/4"	12.0 - 20.0	21.0	30.0	30.0	v	33.0	50.0	CRXF2N2N	CRXM2N2N	
	1"				36.0	36.0	39.8		CRXF2N3N	CRXM2N3N	
1"	3/4"	12.0 - 20.0	26.0	36.0	30.0	30.0	33.0	50.0	CRXF3SN2N	CRXM3SN2N	
	1"				36.0	36.0	39.8		CRXF3SN3N	CRXM3SN3N	
	1"	16.0 - 26.0	26.0	36.0	36.0	36.0	39.8	52.0	CRXF3N3N	CRXM3N3N	
	1 1/4"				46.0	46.0	51.0		CRXF3N4N	CRXM3N4N	
1 1/4"	1"	16.0 - 26.0	28.0	46.0	36.0	36.0	39.8	52.0	CRXF4SN3N	CRXM4SN3N	
	1 1/4"				46.0	46.0	51.0		CRXF4SN4N	CRXM4SN4N	
	1 1/4"	20.0 - 33.0	28.0	46.0	46.0	46.0	51.0	54.0	CRXF4N4N	CRXM4N4N	
	1 1/2"				55.0	55.0	61.0		CRXF4N5N	CRXM4N5N	
1 1/2"	1 1/4"	20.0 - 33.0	28.0	55.0	46.0	46.0	51.0	54.0	CRXF5SN4N	CRXM5SN4N	
	1 1/2"				55.0	55.0	61.0		CRXF5SN5N	CRXM5SN5N	
	1 1/2"	29.0 - 41.0	28.0	55.0	55.0	55.0	61.0	56.0	CRXF5N5N	CRXM5N5N	
	2"				67.0	67.0	75.0		CRXF5N6N	CRXM5N6N	
2"	1 1/2"	29.0 - 41.0	28.0	67.0	55.0	55.0	61.0	56.0	CRXF6SN5N	CRXM6SN5N	
	2"				67.0	67.0	75.0		CRXF6SN6N	CRXM6SN6N	
	2"	36.0 - 52.0	28.0	67.0	67.0	67.0	75.0	58.0	CRXF6N6N	CRXM6N6N	
	2 1/2"				80.0	80.0	89.0		CRXF6N7N	CRXM6N7N	
2 1/2"	2"	36.0 - 52.0	41.0	80.0	67.0	67.0	75.0	58.0	CRXF7SN6N	CRXM7SN6N	
	2 1/2"				80.0	80.0	89.0		CRXF7SN7N	CRXM7SN7N	
	2 1/2"	50.0 - 65.0	41.0	80.0	80.0	80.0	89.0	60.0	CRXF7N7N	CRXM7N7N	
	3"				95.0	95.0	106.0		CRXF7N80N	CRXM7N80N	